

HOME ASSIGNMENT

PHOENIX FEATHER ACADEMY OF MUSIC (949)458-5899

YELLOW 20

Practice this whole page every day:

	DAY 1	DAY 2	DAY 3	DAY 4	DAY 5	DAY 6
<p><u>FINGER EXERCISES</u> <i>What you should already know (just do every day)</i> #1 - 6 Sing the Solfege out loud and play every day!</p>						
<p><u>GRADUATION PREPARATION</u> My name is _____ I am going to sing _____ and _____ I am going to play _____ and _____ Be sure to practice your pieces and remember to bow!</p>						
<p><u>THE ROCKING HORSE (page 40)</u> <i>What you should already know</i> Say the note names and play Left Hand measures 1 - 4 Say the note names and play Right Hand measures 5 - 8 Sing and play Hands Together measures 1-2 <i>What you should be able to do by next week:</i> Sing and play Hands Together measures 3-4</p>						
<p><u>ODE TO JOY</u> <i>What you should already know</i> Point and follow along with the CD Sing the whole song by memory</p> <p><u>ODE TO JOY LEFT HAND (NEXT PAGE)</u> Point and follow along with the CD</p>						
<p><u>ITALIAN LULLABYE (page 44)</u> <i>What you should already know</i> Point and sing along with the CD Sing and play Hands Together with the CD This solo is week 21. How well you prepare your solo is a test of how well you will do in the Gold Book!</p>						
<p><u>SHEPHERD'S DANCE</u> <i>What you should already know</i> Point and sing along with the CD</p>						
<p><u>MARY HAD A LITTLE LAMB IN G MAJOR</u> <i>What you should already know</i> Point and sing along with the CD</p>						
<p><u>WANT MORE?</u> Try playing Brontosaurus Babies and Tyrannosaurus Rex with your hands crossed over one another: Right Hand plays low and Left Hand plays High!</p>						

BY NOW, YOU SHOULD HAVE A REGULAR PRACTICE SCHEDULE. Although this book moves a bit slowly, the next book has more songs, and is more difficult. If you have not established good practice habits by now, work hard to do so before the next book

doremi@msn.com (949)458-5899 Ms. Kirsten

Can you name the notes on this page? Remember to draw BELLY BUTTONS before you start!

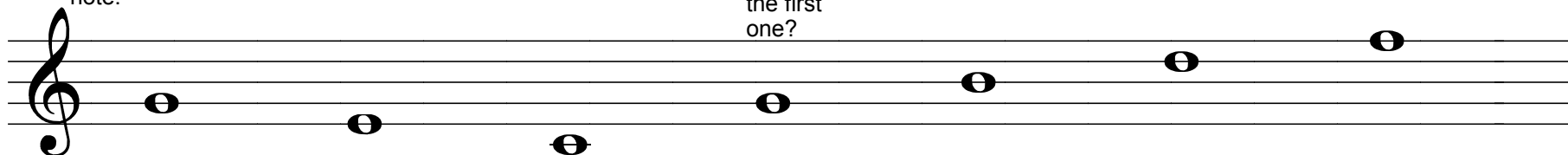
Write the names of the NOTES - do not write the names of the belly buttons.

(Write the note names UNDER the notes, please)

NAME _____

If you say your "Tall Skinny S" poem, you can figure out the first note.

Isn't this note the same as the first one?



If you say your "Big round dot on" poem, you can figure out the first note.

Isn't this note the same as the first one?

