

HOME ASSIGNMENT

PHOENIX FEATHER ACADEMY OF MUSIC (949)458-5899

PURPLE 19

NAME _____

Practice this whole page every day:

	DAY 1	DAY 2	DAY 3	DAY 4	DAY 5	DAY 6
<u>L.A.D (Line A Day) Book</u> # 49 Do the steps and practice until you can play all four measures very well						
<u>My Favorite Songs</u> Add CAPTAIN KIDD to your singing list Sing and Play your entire list every day Be prepared to sing/play anything on your list at any time!						
<u>SCALES and TWO-HAND CHORDS - Do two each day</u> Remember to sing the notes and say the chord names - WORK EXTRA on any that are hard	D Bm	Bflat Gm	F Dm	G Em	C Am	The two scales that you play the worst
<u>SUGARPLUM</u> Point and follow your part along with the CD PRACTICE YOUR PART - SECTION B YOU CAN FIND YOUR PART ON YOUR SOLO PAPER!						
<u>THE END</u> <i>What you should already know:</i> Point and follow along with the CD without getting lost Sing and play Right Hand measures 1 - 6 -practice WITH THE CD <i>What you should be able to do by next week:</i> Sing and play Right Hand measures 7 - 10 - watch those finger numbers!						
<u>RONDO ALLA TURCA</u> <i>What you should already know:</i> Point and follow along with the CD Sing and play Right hand measures 1-4 practice WITH THE CD Sing and play Right Hand measures 10 - 13 with correct fingers <i>What you should be able to do by next week:</i> Sing and play Right Hand 14 -17 - watch those finger numbers!	14-15	14-15	14-17	14-17		
<u>HEEL AND TOE</u> <i>What you should already know:</i> Point and SING along with the CD <i>What you should be able to do by next week:</i> Play Left Hand section C	WRITE 9-10	THE COUNTS AND	CHORDS (A	major)		
<u>GREENSLEEVES</u> <i>What you should already know:</i> Point and SING WITH THE CD Play measures 10-11 WITH CORRECT FINGERS by memory <i>What you should be able to do by next week:</i> Play measures 18-19 WITH CORRECT FINGERS by memory						
<u>WILD HORSEMAN</u> POINT AND FOLLOW ALONG WITH THE CD EVERY DAY <i>What you should already know:</i> Sing and play measure 1-8 HANDS TOGETHER BY MEMORY Sing and play measure 9-16 HANDS TOGETHER BY MEMORY <i>Keep working on:</i> Practice measures 1-8 WITH THE CD It won't be easy at first, but each day, it will get better and better! DON'T GIVE UP! Try to get one more measures WITH THE CD each day!						
<u>FAUST WALTZ</u> <i>What you should already know:</i> Play Left Hand WITH THE CD Sing and play Right Hand WITH THE CD Sing and play Hands Together measures 1-16 -practice WITH THE CD <i>What you should be able to do by next week:</i> Sing and play Hands Together measures 17-20	17-18	17-18	17-20	17-20		
<u>SAILOR'S HORNS</u> Prepare for your solo by singing and playing Hands Together WITH THE CD						

TODAY'S SOLO:

CAPTAIN KIDD

1. Find the relative Major key (go up three notes from the minor and then three half-steps from the minor)
2. Draw the key signature for the relative Major key
3. Add the sharps/flats that you drew in your key signature to ALL THREE minor scales.
4. On the HARMONIC minor scale, raise the seventh note a half step - ON BOTH SIDES.

Circle the notes that you raised.

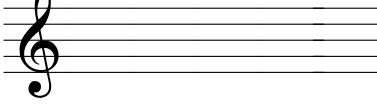
5. On the MELODIC minor scale, raise the sixth and seventh notes a half step - ON THE UP-SIDE ONLY

Circle the notes that you raised.

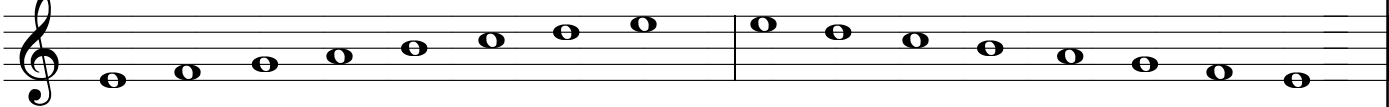
PLAY ALL THREE SCALES - can you hear the difference in their sounds?

Try to do each step in this box:


Step 1 Em / _____ MAJOR

Step 2  (Half-step down from "G" is "F-sharp". Draw the order of sharps until you get to "F-sharp")

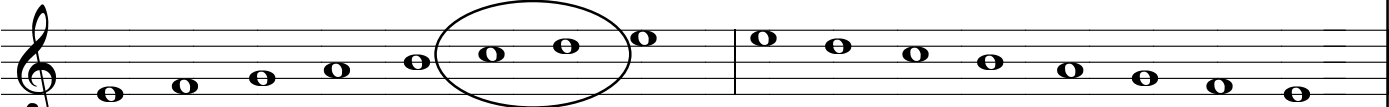
E NATURAL minor Add the sharp(s) from step 1 to ALL THREE scales

Step 3  (add the F-sharp to all three scales)

E HARMONIC minor Raise the 7th note one half step on both sides of the scale

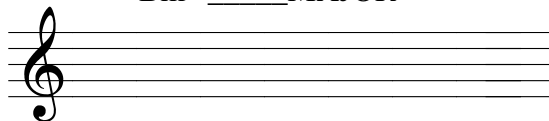
Step 4 

E MELODIC minor Raise the 6th & 7th notes a half step on the UP SIDE of the scale ONLY

Step 5 

PLAY THE SCALES!!!

Bm / _____ MAJOR



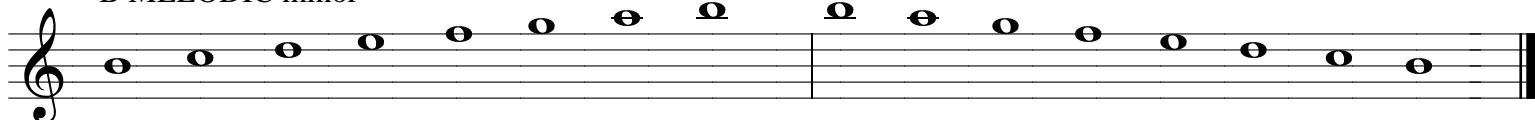
B NATURAL minor



B HARMONIC minor



B MELODIC minor



1. Find the relative Major key (go up three notes from the minor and then three half-steps from the minor)
2. Draw the key signature for the relative Major key
3. Add the sharps/flats that you drew in your key signature to ALL THREE minor scales.
4. On the HARMONIC minor scale, raise the seventh note a half step - ON BOTH SIDES.

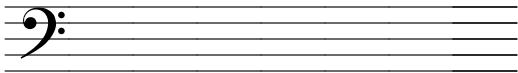
Circle the notes that you raised.

5. On the MELODIC minor scale, raise the sixth and seventh notes a half step - ON THE UP-SIDE ONLY.

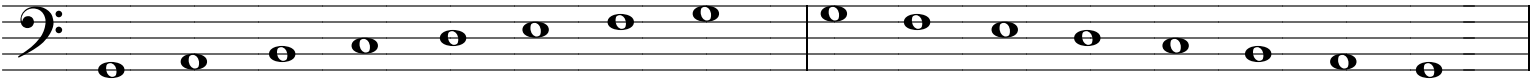
Circle the notes that you raised.

PLAY ALL THREE SCALES - can you hear the difference in their sounds?

Gm / _____ MAJOR



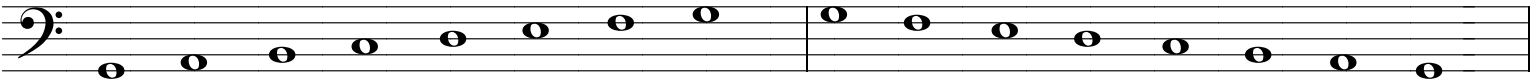
G NATURAL minor



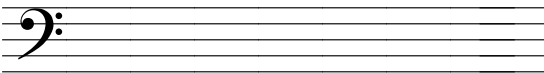
G HARMONIC minor



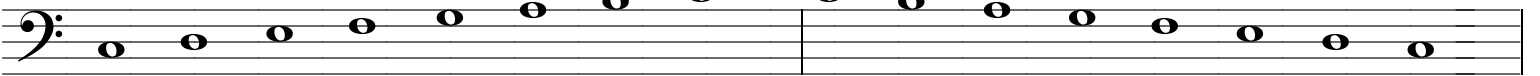
G MELODIC minor



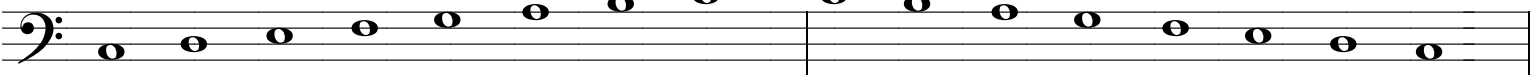
C#m / _____ MAJOR



C# NATURAL minor



C# HARMONIC minor



C# MELODIC minor



1. Find the relative Major key (go up three notes from the minor and then three half-steps from the minor)
2. Draw the key signature for the relative Major key
3. Add the sharps/flats that you drew in your key signature to ALL THREE minor scales.
4. On the HARMONIC minor scale, raise the seventh note a half step - ON BOTH SIDES.

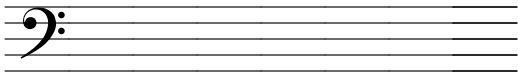
Circle the notes that you raised.

5. On the MELODIC minor scale, raise the sixth and seventh notes a half step - ON THE UP-SIDE ONLY.

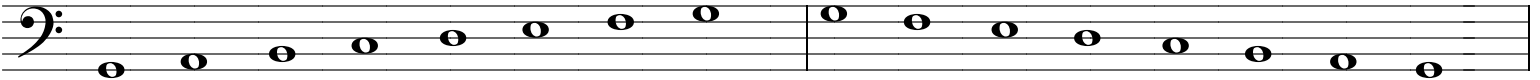
Circle the notes that you raised.

PLAY ALL THREE SCALES - can you hear the difference in their sounds?

Gm / _____ MAJOR



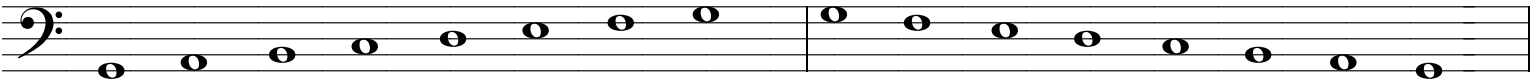
G NATURAL minor



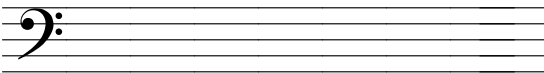
G HARMONIC minor



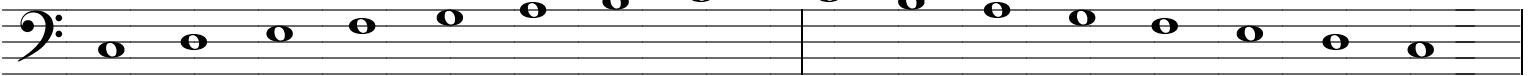
G MELODIC minor



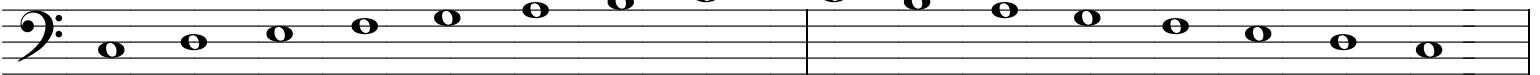
C#m / _____ MAJOR



C# NATURAL minor



C# HARMONIC minor



C# MELODIC minor



1. Find the relative Major key (go up three notes from the minor and then three half-steps from the minor)
2. Draw the key signature for the relative Major key
3. Add the sharps/flats that you drew in your key signature to ALL THREE minor scales.
4. On the HARMONIC minor scale, raise the seventh note a half step - ON BOTH SIDES.

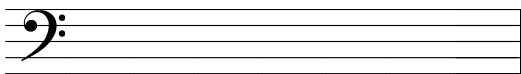
Circle the notes that you raised.

5. On the MELODIC minor scale, raise the sixth and seventh notes a half step - ON THE UP-SIDE ONLY.

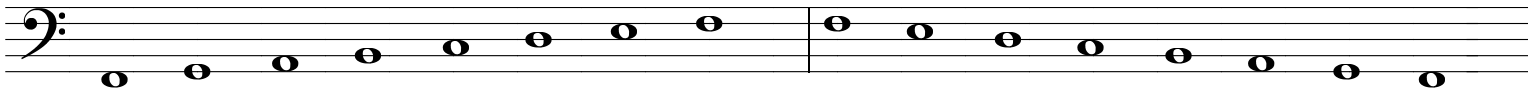
Circle the notes that you raised.

PLAY ALL THREE SCALES - can you hear the difference in their sounds?

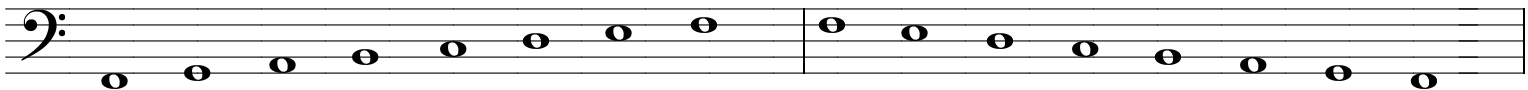
Fm / _____ MAJOR



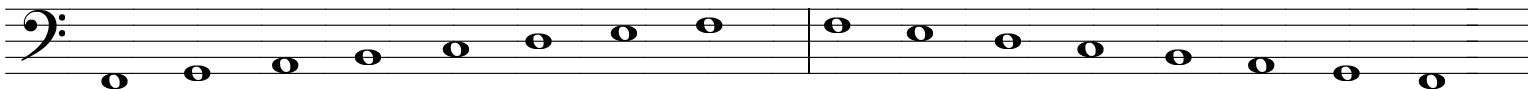
F NATURAL minor



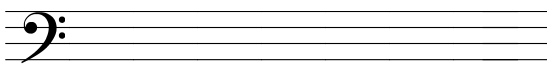
F HARMONIC minor



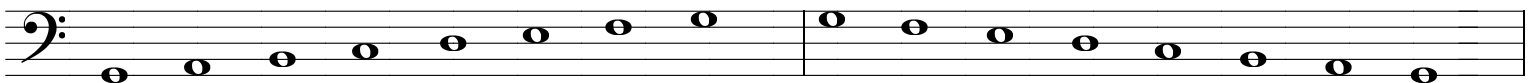
F MELODIC minor



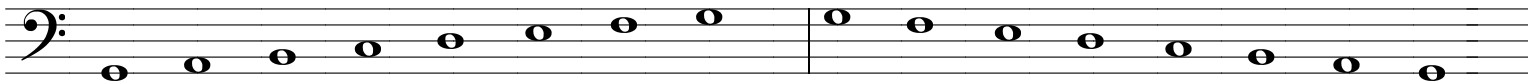
G#m / _____ MAJOR



G# NATURAL minor



G# HARMONIC minor



G# MELODIC minor

