

# HOME ASSIGNMENT

PHOENIX FEATHER ACADEMY OF MUSIC (949)458-5899

GREEN 26

NAME \_\_\_\_\_

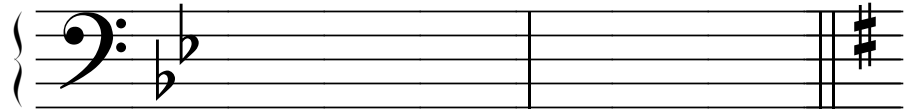
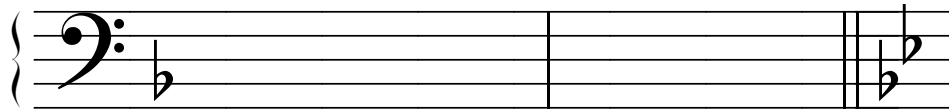
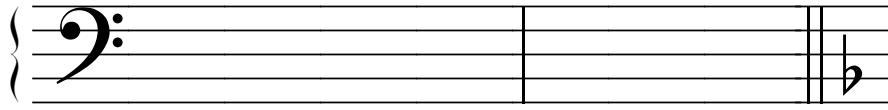
Practice this whole page every day:

	DAY 1	DAY 2	DAY 3	DAY 4	DAY 5	DAY 6
<b>HANON</b> Play the entire exercise Hands Together - remember to use round, strong fingers						
<b>SIGHT READING</b> Week 26 - Practice until you can sing and play the entire exercise without looking at your fingers. CAN YOU PLAY IT IN DIFFERENT KEYS?						
<b>SCALES AND TWO HAND CHORDS</b> <i>What you should already know:</i> MAGENTA SCALES Dm GREEN SCALES C Am G Em and F as they are written in the book B-flat scale Hands Together slowly with chords G minor Hands Together including all of the chords						
<b>PREPARATION FOR THE BLUE BOOK</b> <i>What you should already know (just play every day)</i> <b>Play the first section by memory with your Left Hand</b> <b>You will be required to play one section of the Preparation Page</b> <b>BY MEMORY on quiz day!!!!</b>						
<b>ALSO SPRACH ZARATHUSTRA</b> You can find your part on your solo papers. <b>Point and follow your part with the CD</b> <b>Practice measures 27-30 - your part -</b> <b>COUNT OUT LOUD WHILE YOU PLAY (1 - 2 - 3 - 4 etc)</b>						
<b>EL TREN</b> Prepare for your solo by singing and playing Hands Together WITH THE CD						
<b>RONDALLA ARAGONESA</b> <i>What you should already know (just play every day)</i> Sing and play Right Hand alone with the CD Play Left hand alone with the CD Sing and play Hands Together measures 1 - 8 Sing and play Hands Together last two lines <i>What you should be able to do by next week:</i> Sing and play Hands Together whole song slowly						
<b>CIRIBIRIBIN</b> <i>What you should already know (just play every day)</i> Point and sing along with the CD Sing and play Right Hand alone with the CD Play Left hand alone with the CD Sing and play Hands Together measures 1 - 16 <i>What you should be able to do by next week:</i> Sing and play Hands Together measures 17 - 24	17-20	17-20	17-24	17-24		
<b>LA PALOMA</b> <i>What you should already know (just play every day)</i> Point and sing along with the CD Sing the solfege and play the fancy two-hand chords measures 1 - 11 <i>What you should be able to do by next week:</i> Sing the solfege and play the fancy two-hand chords measures 12 - 15						
<b>UNA VALENCIANITA</b> <i>What you should already know (just play every day)</i> Point and follow part 1 along with the CD Sing twelve measures by memory <i>What you should be able to do by next week:</i> Sing four more measures by memory						
<b>BICYCLE BUILT FOR TWO</b> Work on this song for fun						

work carefully - you must put it together correctly!

Draw Three AUTHENTIC CADENCES in these three keys  
Your GREEN QUIZ STUDY SHEET will probably help!

Green 26A



Draw The PRIMARY CHORDS in these three keys  
Your GREEN QUIZ STUDY SHEET will probably help!

