

HOME ASSIGNMENT

PHOENIX FEATHER ACADEMY OF MUSIC (949)458-5899

BLUE 24

NAME _____
Practice this whole page every day:

| | DAY 1 | DAY 2 | DAY 3 | DAY 4 | DAY 5 | DAY 6 |
|---|-------|----------------|----------------|----------------|-------|-------|
| <p><u>SIGHT READING</u> WEEK 24 - Practice until you can sing and play the exercise without looking at your hands. Can you play it in different keys?</p> | | | | | | |
| <p><u>HANON</u> Work on the whole page with HANDS TOGETHER</p> | | | | | | |
| <p><u>SCALES</u> <i>What you should already know (just play every day)</i> GREEN SCALES B-flat Gm BLUE SCALES C Am G Em F Dm - say the words out loud BLUE SCALES Bminor CHORDS ONLY Right Hand alone BLUE SCALES Bminor SCALE - say "Black" and "Thumb" out loud <i>What you should be able to do by next week:</i> BLUE SCALES Bminor CHORDS ONLY Add the Left Hand to the chords</p> | Bflat | Gm | Bflat | Gm | Bflat | Gm |
| | C Am | G Em | F Dm | C Am | G Em | F Dm |
| | | | | | | |
| <p><u>MISSION IMPOSSIBLE</u> Practice playing your part WITH THE CD</p> | | | | | | |
| <p><u>ARABESQUE</u> <i>What you should already know:</i> Sing and play Right Hand alone measures 26 - end Sing and play Hands Together measures 19 - 26 Play Left Hand alone whole song - try it with the slow CD <i>What you should be able to do by next week:</i> Sing and play Hands Together measures 27-40</p> | 31-34 | 31-34 36-40 | 27-34 36-40 | 27-34 36-40 | | |
| <p><u>POLKA</u> <i>What you should already know (just play every day)</i> Play Left Hand whole song fancy style Sing and play Right Hand measures 1 - 8 <i>What you should be able to do by next week:</i> Sing and play Right Hand measures 9 - 16</p> | 9-10 | 9-12 | 9-14 | 9-16 | | |
| <p><u>LA DONNA E MOBILE</u> <i>What you should already know (just play every day)</i> Play Left Hand with the CD Sing and play Right Hand with the CD Sing and play Hands Together measures 9 - 12 <i>What you should be able to do by next week:</i> Sing and play Hands Together measures 13 - 20</p> | 13-14 | 13-16 | 13-18 | 13-20 | | |
| <p><u>QUIZ DAY SONG: PONY</u> <i>What you should already know (just play every day)</i> Point and follow along with the CD Sing the whole song by memory Play two-hand chords measures 5 - 8 Play two-hand chords measures 1 - 2 <i>What you should be able to do by next week:</i> Play two-hand chords measures 3 - 4</p> | 3 | 3 | 3-4 | 3-4 | | |
| <p><u>FUNERAL MARCH</u> Prepare for your solo by singing and playing Hands Together WITH THE CD</p> | | | | | | |
| <p><u>SOFT BREEZES</u> <i>What you should already know (just do every day)</i> Point and sing along with the CD</p> | | | | | | |
| <p><u>YOU ARE MY SUNSHINE</u> This is a fun song that you might want to do for graduation</p> | | | | | | |

Solve these INTERVALS

NAME _____

BLUE 24

Remember to write the number of half-steps on top

Remember to write the intervals on the bottom

THERE ARE NO CIRCLES. All of these problems can be answered.

| | | | | |
|-----|---|----|---|---|
| | D | m | M | A |
| 2nd | | | 2 | |
| | | | | |
| | | | | |
| | | 10 | | |

(9) (10) (8) (7)

M6th A6th m6th D6th _____

| | | | |
|-----|--------------|---|---|
| | D | P | A |
| 1st | X | | |
| | | 5 | |
| | | | |
| | | | |

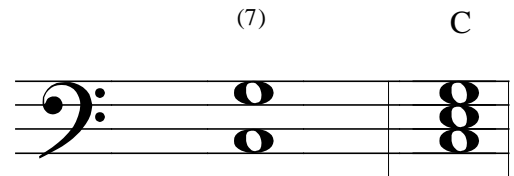
PERFECT INTERVALS

(Goes with Blue 24)

Perfect Intervals are intervals that do not have "quality" - they do not sound Major or minor.

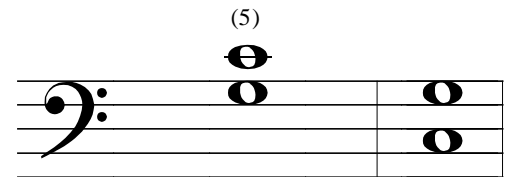
Perfect Intervals can be flipped upsidedown and they will remain Perfect (minor intervals become Major and Major intervals become minor when they are flipped)

This is a Perfect 5th. Do you see that it is the outside notes of a chord?



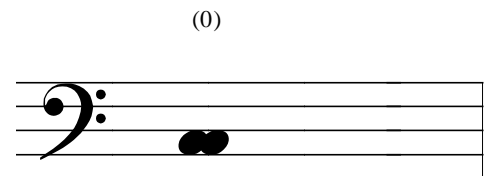
P5th

This is a Perfect 4th. Do you see that it is the same notes as a Perfect 5th - just flipped upsidedown?



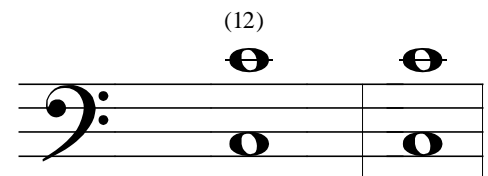
P4th

This is a Perfect 1st. Do you notice that it is the same note played over?



P1st

This is a Perfect 8th. Do you notice that if you turn it upside down it is exactly the same notes?



P8th