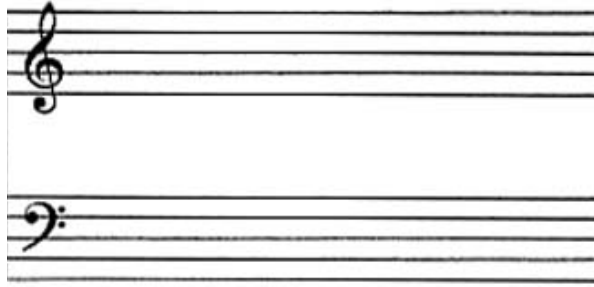


BLUE BOOK PRACTICE QUIZ

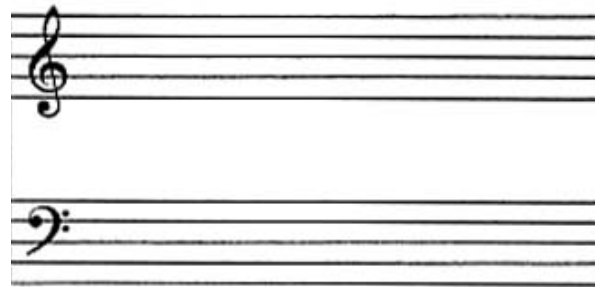
Find the answers at <http://phoenixfeather.com/blue.html>

Name: _____

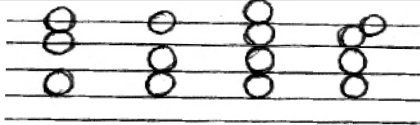
Draw the Order of Sharps



Draw the Order of Flats



Write the inversion numbers (or "7") under each of these chords:



Put an "X" on the name of each of these chords:



In a MAJOR KEY:

In a MINOR KEY:

I = Major

I = _____

II = _____

II = _____

III = _____

III = _____

IV = _____

IV = _____

V = _____

V = _____

VI = _____

VI = _____

VII = _____

VII = _____

What are the Primary Chords? _____

What is an Authentic Cadence? _____

What are the steps in a major scale (bird beaks)?

Name these major and minor keys

One Sharp _____

One Flat _____

Two Sharps _____

Two Flats _____

Three Sharps _____

Three Flats _____

Four Sharps _____

Four Flats _____

Five Sharps _____

Five Flats _____

Six Sharps _____

Six Flats _____

Seven Sharps _____

Seven Flats _____

FILL IN THIS HALF-STEP CHART

	Diminished	Minor	Major	Augmented

	Diminished	Perfect	Augmented